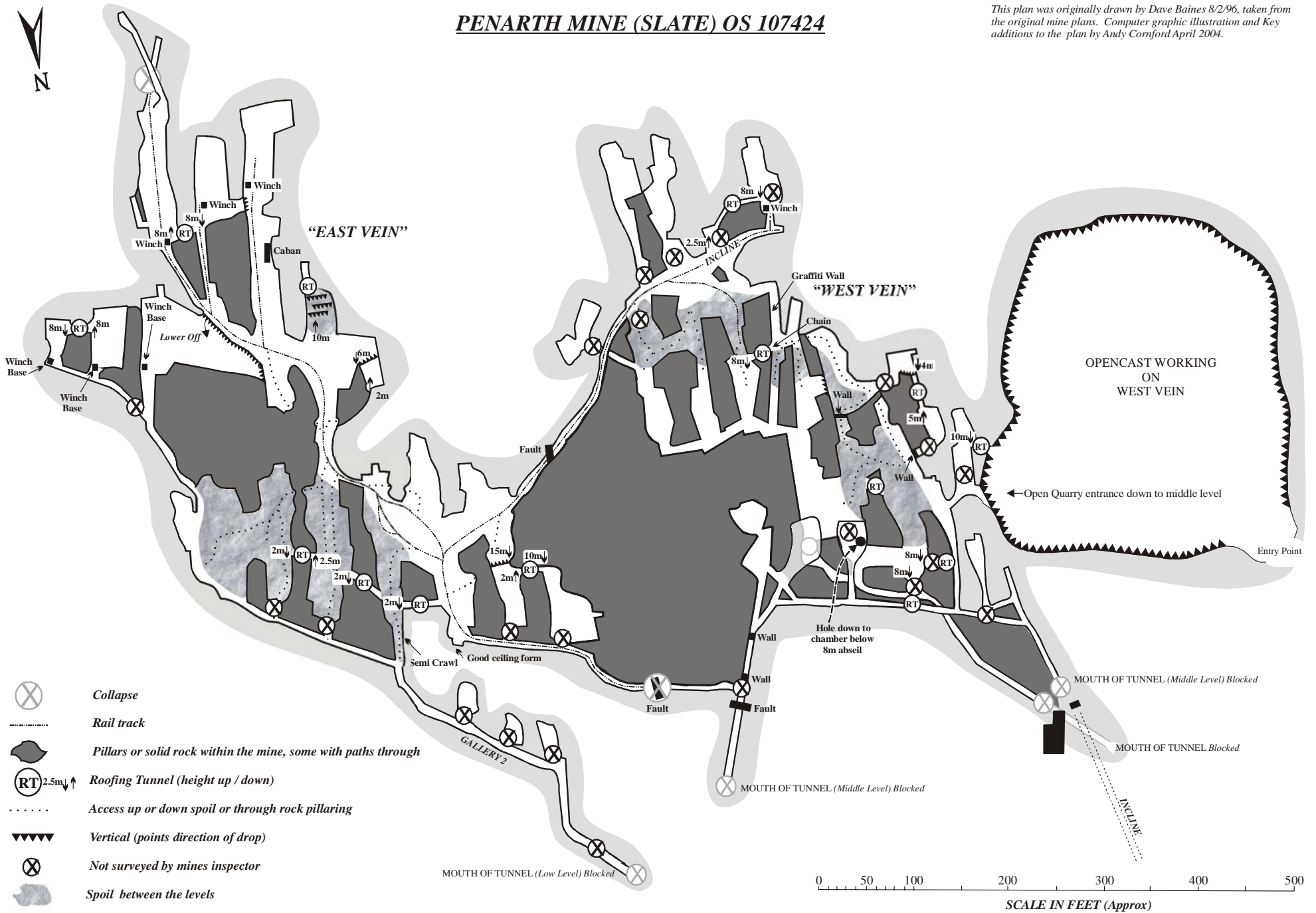










PENARTH MINE (SLATE) OS 107424

This plan was originally drawn by Dave Baines 8/2/96, taken from the original mine plans. Computer graphic illustration and Key additions to the plan by Andy Cornford April 2004.



-  Collapse
-  Rail track
-  Pillars or solid rock within the mine, some with paths through
-  Roofing Tunnel (height up / down)
-  Access up or down spoil or through rock pillaring
-  Vertical (points direction of drop)
-  Not surveyed by mines inspector
-  Spoil between the levels

0 50 100 200 300 400 500
SCALE IN FEET (Approx)